

# North West London Pathology Modernisation Programme

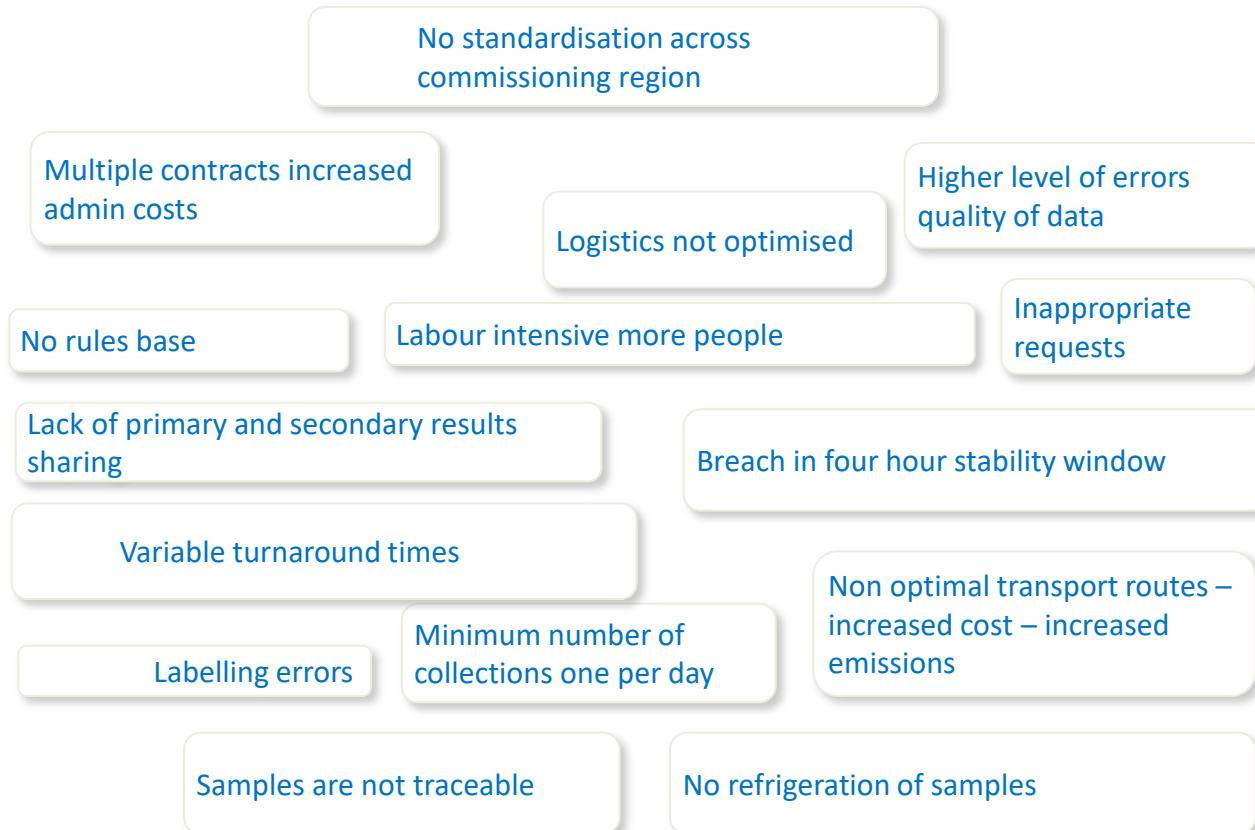
October 2017

Phil Brown

Director of Operations

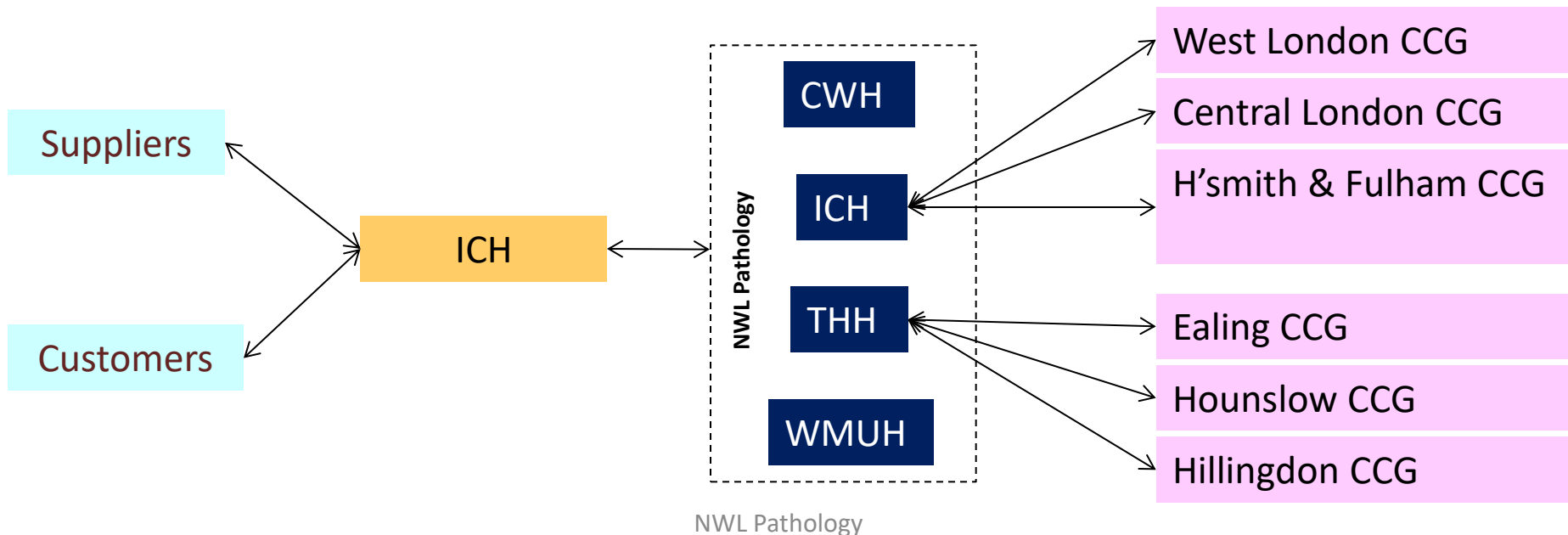


# Current Pathology challenges



# NHS owned entity to benefit of stakeholders

- Arms length organisation (ALO)
- Hosted by Imperial College Healthcare
- Contracts
  - Host to NWL Pathology partners
  - Partners to Primary Care (CCGs) – place on NWLP Board
  - Host to 3<sup>rd</sup> parties



# GP, CCG and STP requirements

- 1 Consultant led services
- 2 No surprises – right patient/ right test/ right result whilst achieving right price
- 3 IT is king – common LIMS and OCS (including Diagnostic Cloud)
- 4 Help with demand management initiatives to bake in savings
- 5 Scalable solution with full regulatory compliance
- 6 Fixed contract price with savings from efficiencies to CCG's of 17%

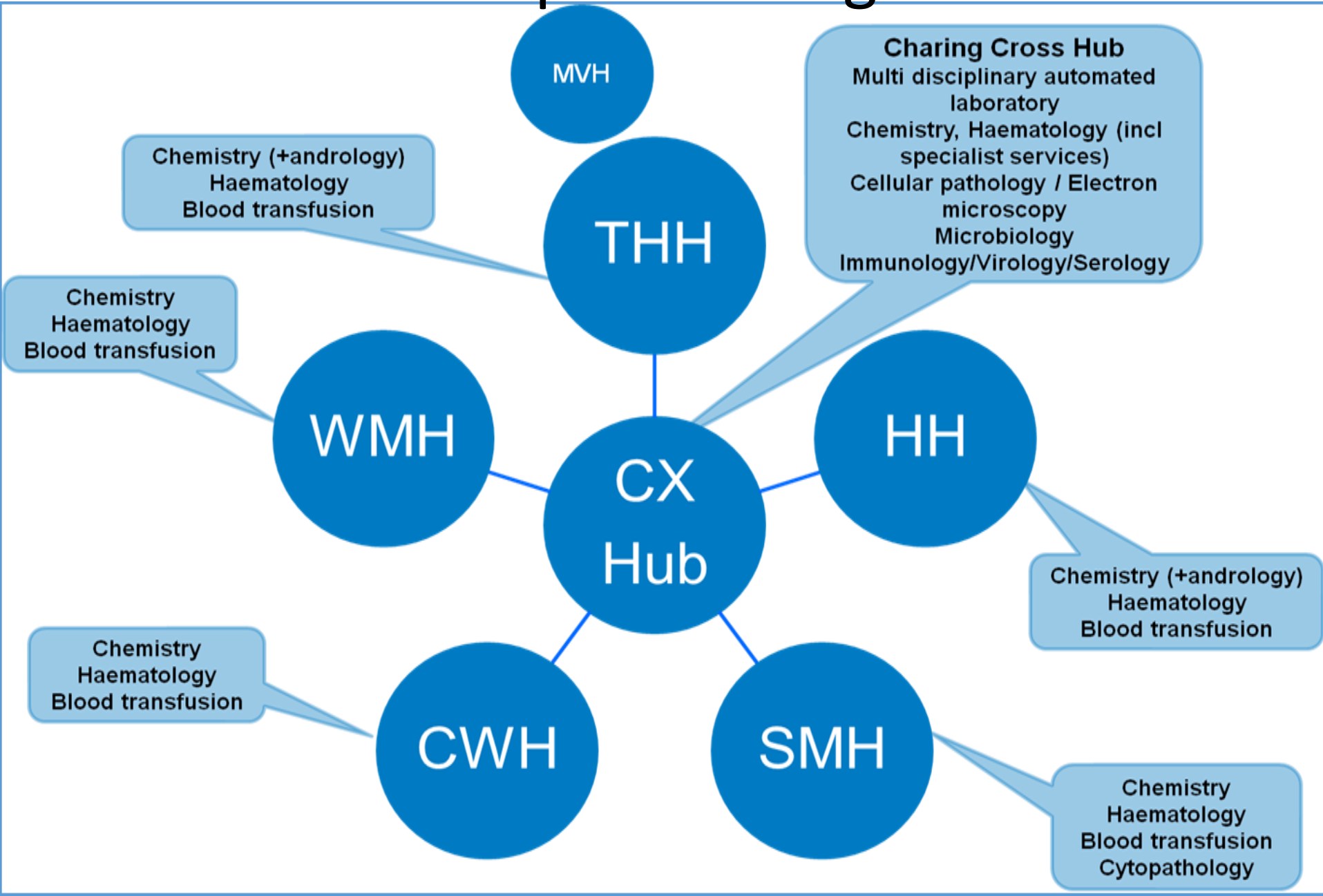
# NWLP delivers efficiencies

1. Efficiencies from co-location of staff from all disciplines for multidisciplinary diagnostic teams
2. Pooled expertise attracts increased R&D funding and greater training opportunities
3. Common workforce with standardised working practices increases efficiency and reduced costs
4. Reduction in management overheads
5. Integration of common analytical platforms and LIMS – reduced cost increased resilience

# Consultant led service

- 1 Extensive number of Consultants available 24/7
- 2 Delivered harmonisation, standardised working practices and Consultant led demand management – right patient/ right test/ right result
- 3 Proven improved clinical outcome and patient experience
- 4 Investment identified for Estate, Equipment, I.T, website and workforce
- 5 Proven track record of integrating Services and completed TUPE transfer
- 6 Multiple and frequent collections, more results back within surgery opening hours

# Hub and Spoke configuration



# 21<sup>st</sup> Century Laboratory Solution

Estate is fully owned by the trust and is already established which includes:

- Purpose built technologically advanced lab
- LEAN designed
- Full back up within the network (and agreement with SWLP if required)
- Consultants already employed by the trust

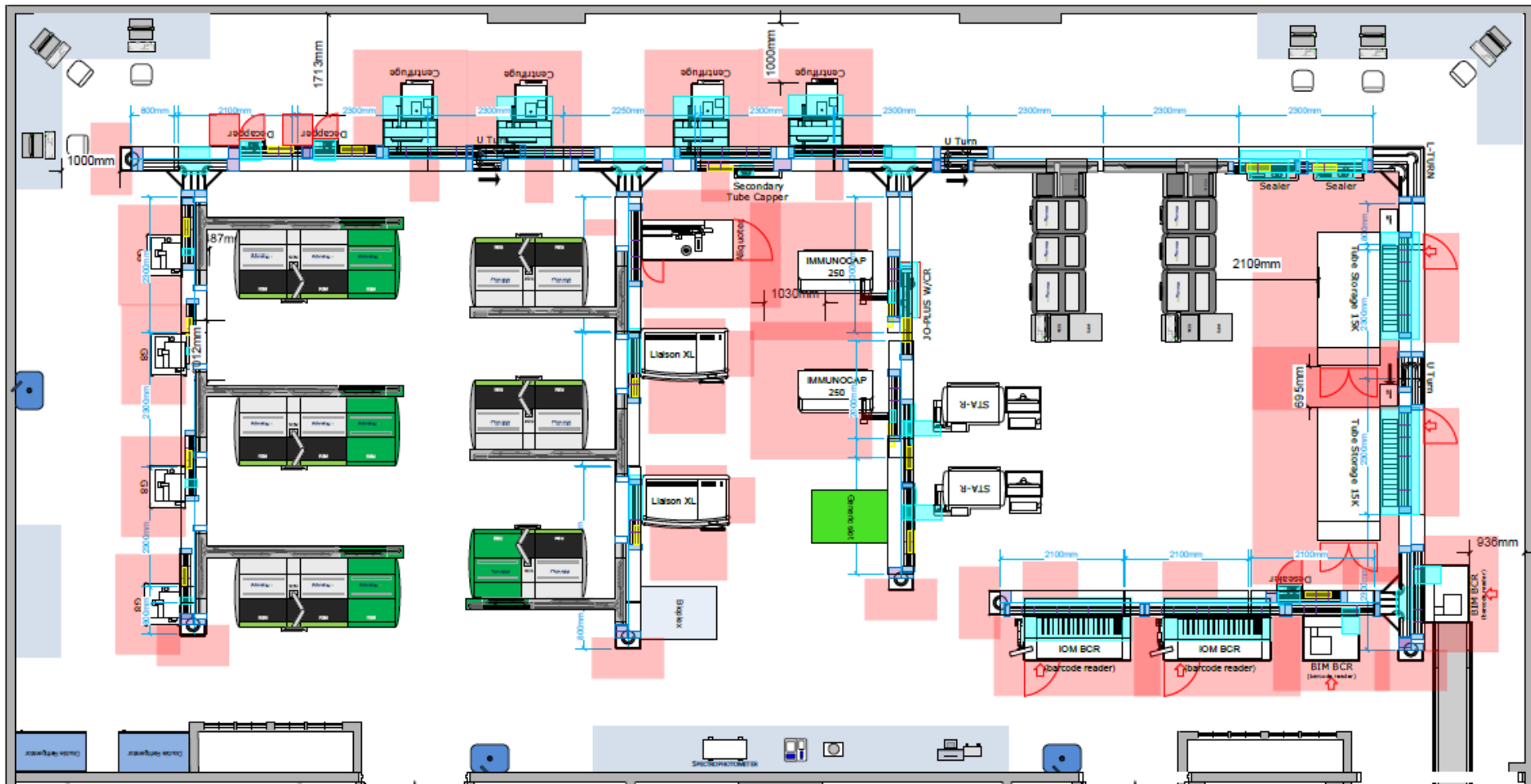
Managed Service Contracts in place

Tracked Chemistry			
	5 x Alinity i	6 x Alinity c	4 x G8 1 x Liaison XL
Tracked Haematology			
	3 x Sta-R Max 2	4 x Alinity hq with SMS	Alifax JoPlus ESR
Tracked Infection + Immunity			
	2 x Phadia 250	1 x BioPlex 2200	1 x Liaison XL

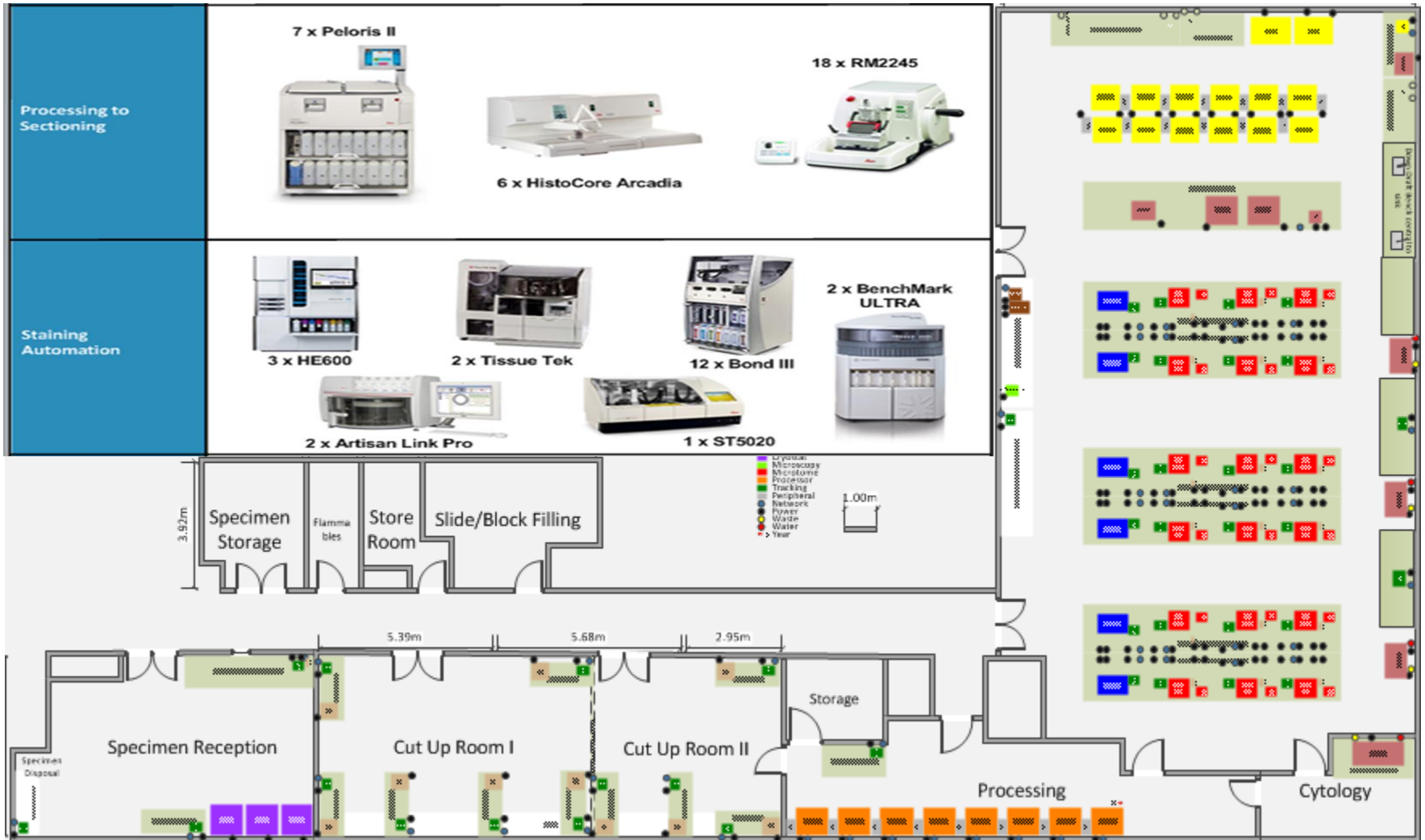
Discipline	# Instruments
Biochem	4
Cell Path	71
Chemistry	35
Haematology	10
Inf +Imm	13
Micro	18
Spec Chem	4
Spec Haem	3
<b>Grand Total</b>	<b>158</b>



# Hub Track Design



# Cell Path Solution



# Logistics

1 Specimen and Pathology Transportation Specialist

2 CPA/UKAS and MHRA compliant for the transportation of specimens

3 Full sample traceability

4 Optimal routes planned to avoid 4 hour specimen stability issues



Offers reduced costs and carbon footprint to CCG's

# Informatics

**LIMS Hardware investment has been made** = No loss of service or data  
**No single point of failure**  
= Continuity of service secure connections in duplicated data centres



## Sunquest ICE GP order comms

- Secure transfer of data
- Traceability
- NHS Number
- Connectivity to the Diagnostic Cloud
- Complete patient record for both primary and secondary care results
- Download of tests from Secondary care will count towards QOF

**Robust Implementation plan delivered though a dedicated team**

# Sustainable and resilient

- 1 Business case approved with upside and downside scenarios on growth
- 2 Resilience from multi site back-up
- 3 Scalable solution to support Carter plan for STP pathology network



# Added value

- 1 Specialist information and advice to professionals in primary care relating to individual patients or to the relevance and validity of tests
- 2 Guidance, quality assurance and support for Point Of Care Testing (POCT)
- 3 Specialist advice in other relevant areas including health and safety and IM&T
- 4 Education and training for pathologist, undergraduate and postgraduate doctors, GP's and other clinicians and healthcare professionals in all settings
- 5 Translational research and development, including clinical trials and evaluation of new technology and support for teaching and training.