





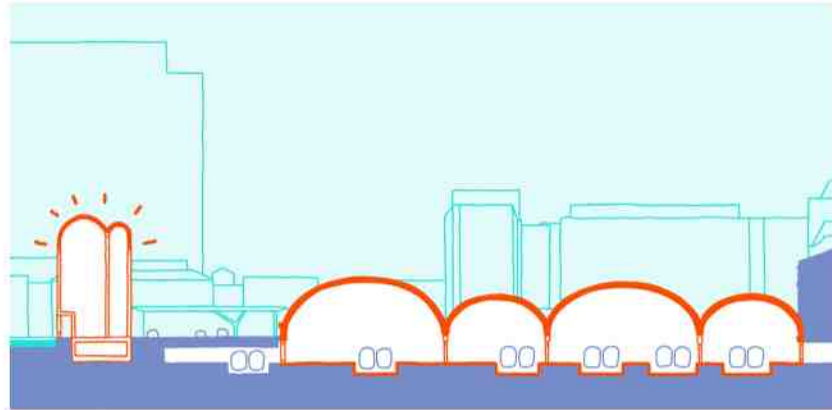


THE
FLEMING
CENTRE

The Fleming Centre

Design Touchstones

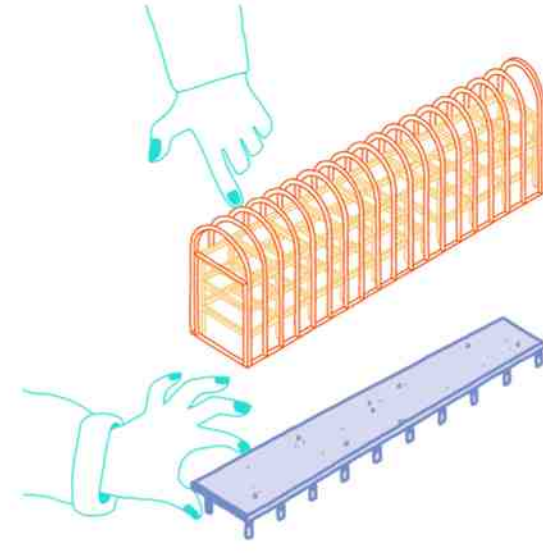
History



The form of the new Fleming Centre is seen as a continuation of Brunel's arches over Paddington Station giving a distinctive, memorable form.

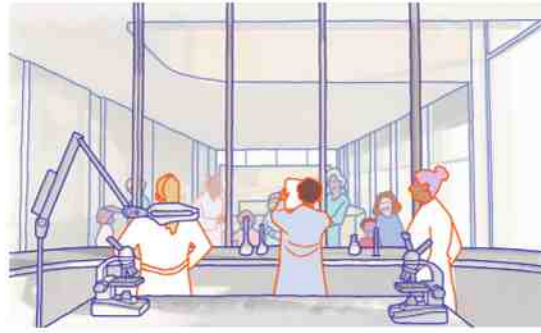
Timber

Materials with lower embodied carbon are proposed for the building's structure. A timber structure will support upper floors and the roof.



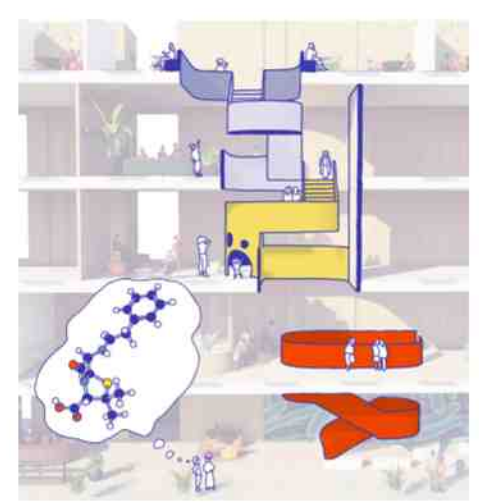
Science

The Fleming Centre puts science on display. Activity within the lab spaces will be viewable, bringing Discovery Centre visitors into close contact with the research into Anti-microbial Resistance pioneered by Fleming nearly a century ago.



A brightly coloured stair connects departments on each building level, encouraging collaboration and animating the waterfront. Views between levels will encourage interaction.

Interiors



Materials

Main facades: timber framed curtain walling with brightly coloured panels.
Roof: an arching patinated zinc roof finish with photovoltaic cells.
Core: coloured glazed brick with metal reveals to circular windows in a contrasting colour.
Interiors: natural timber and contrasting colourful accents.



MASTERPLAN VIEW OF THE FLEMING CENTRE FROM THE CANAL WITH WATERSIDE PEDESTRIAN ROUTE AND NEW CONNECTIONS THROUGH TO PADDINGTON STATION FROM THE TOWPATH



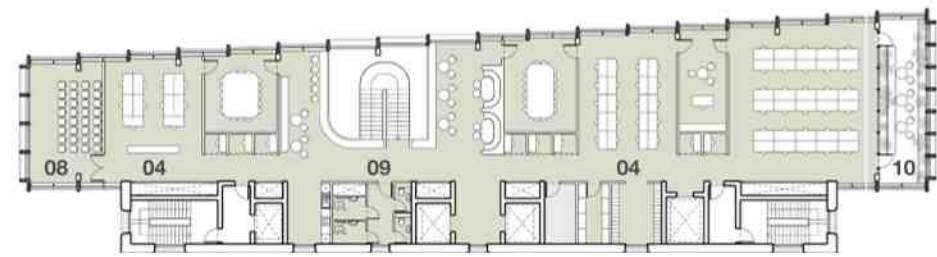
TILTOGRAM SHOWING THE FULLY GLAZED CAFÉ AND DISCOVERY CENTRE AT GROUND FLOOR



VIEW OF THE FLEMING CENTRE FROM PADDINGTON STATION



INTERNAL VIEW OF THE FLEMING DISCOVERY CENTRE



LEVEL 04 PLAN - 1:500



LEVEL 02 and 03 PLAN - 1:500



LEVEL 01 PLAN - 1:500

Key

- WORKSPACE
- CLINICAL RESEARCH FACILITY
- DISCOVERY CENTRE
- LABORATORIES
- 01 ENTRANCE LOBBY
- 02 FLEMING DISCOVERY CENTRE
- 03 CAFÉ and RETAIL
- 04 WORKSPACE
- 05 LABORATORIES
- 06 CRF RECEPTION
- 07 CLINICAL AREA
- 08 CONFERENCE ROOM
- 09 BREAKOUT and COLLABORATION
- 10 TERRACE
- 11 TAXI RANK
- 12 PATERSON BUILDING
- 13 THE POINT



GROUND FLOOR PLAN - 1:500

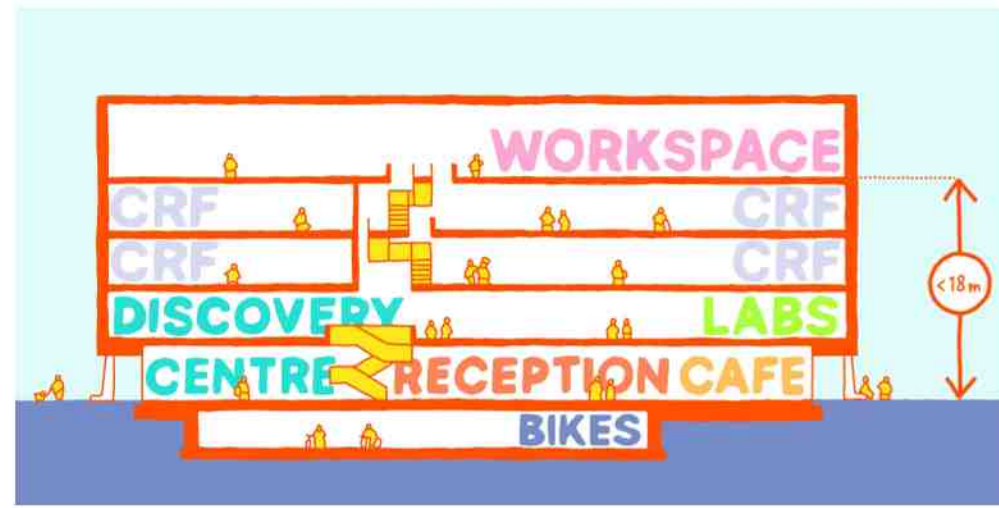
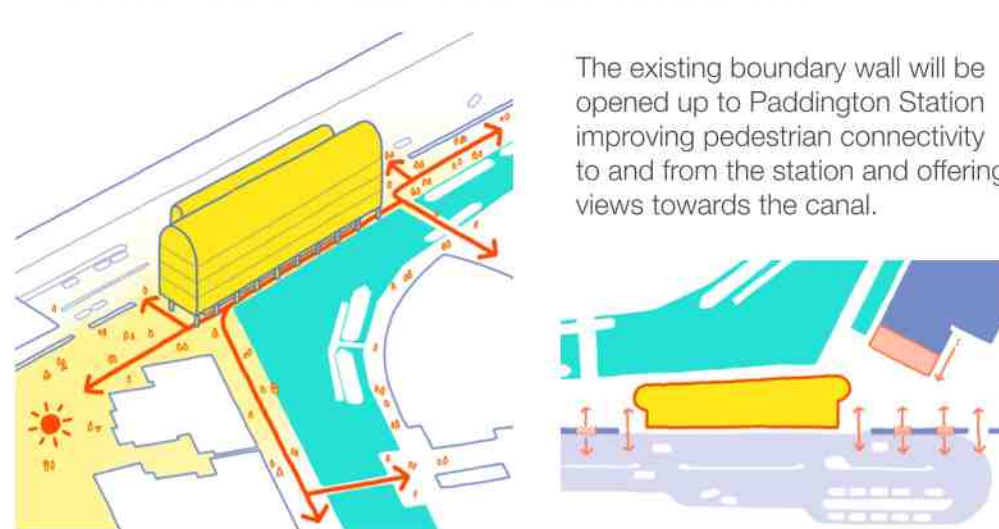


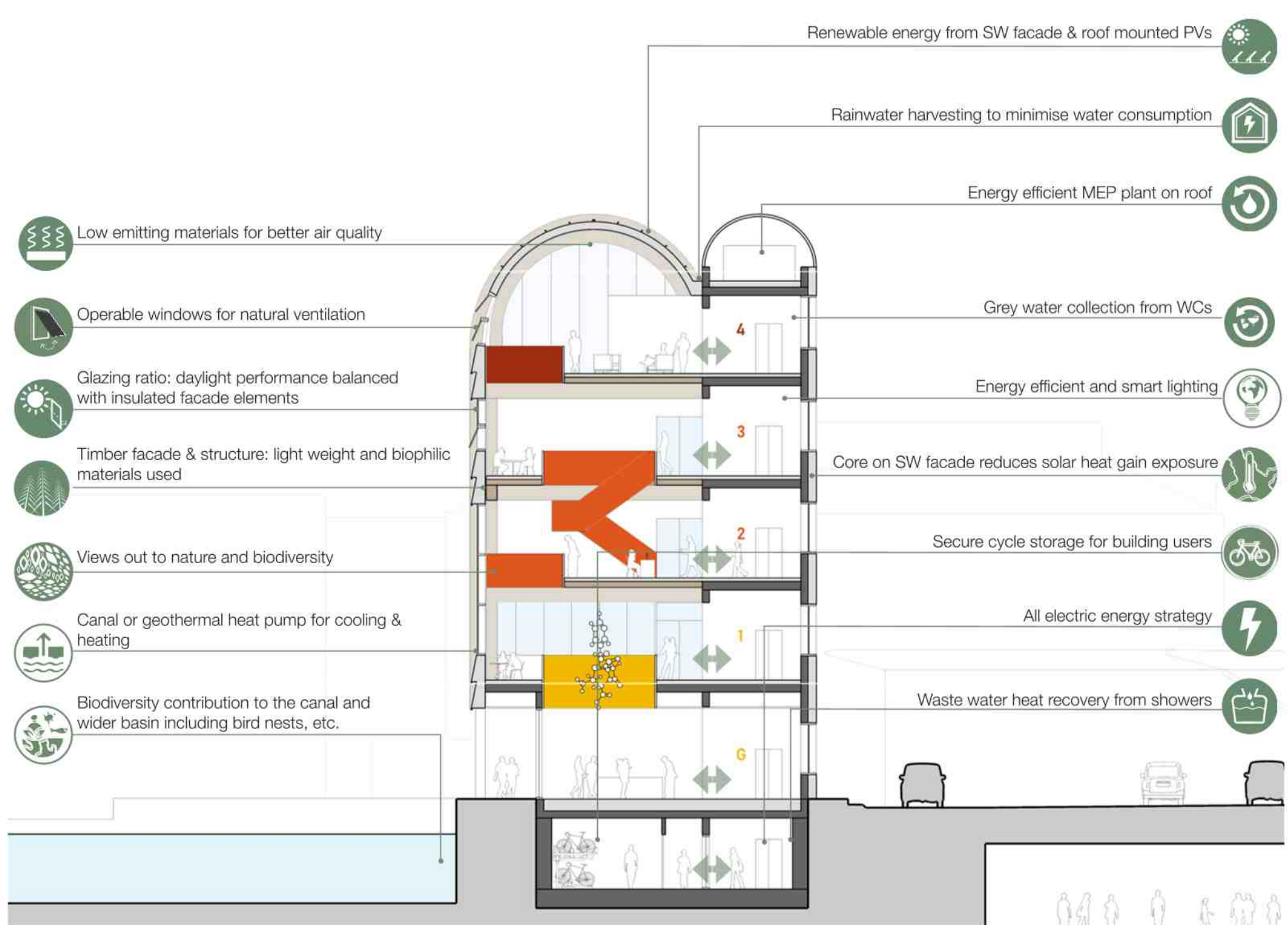
DIAGRAM SHOWING STACKING OF FUNCTIONS

The Fleming Centre proposal stacks the main functions of the brief vertically with the most public at ground level.

- Ground Floor:** Main entrance, shop, café and Discovery Centre. A cut-out void at Level 1 provides visual connectivity between ground and first floor.
- Level 1:** Discovery Centre multi-purpose space and Laboratories. Activity within the Translational Lab is viewable from the Discovery Centre.
- Levels 2 and 3:** Clinical Research Facility. The two floors are linked by a cut-out void and connecting stair.
- Level 4:** Workspace, meeting rooms and administrative support. A stair connects down to the Clinical Research Facility floors below.



CONNECTIONS ACROSS SITE AND TO PADDINGTON STATION



CROSS SECTION INDICATING SUSTAINABLE DESIGN MOVES - 1:200