











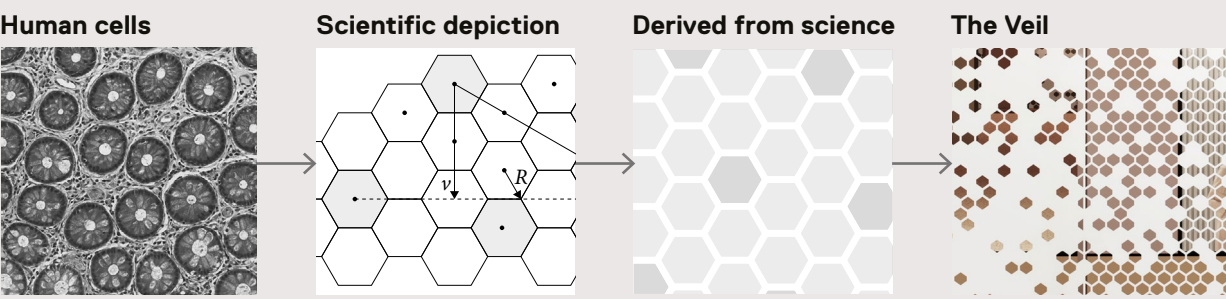


LEARNING THROUGH DESIGN

STORYTELLING THROUGH THE BUILDING: SCIENCE IN ACTION

The building envelope reflects the architectural vision and values, creating a striking visual identity that enhances user experience and engagement.

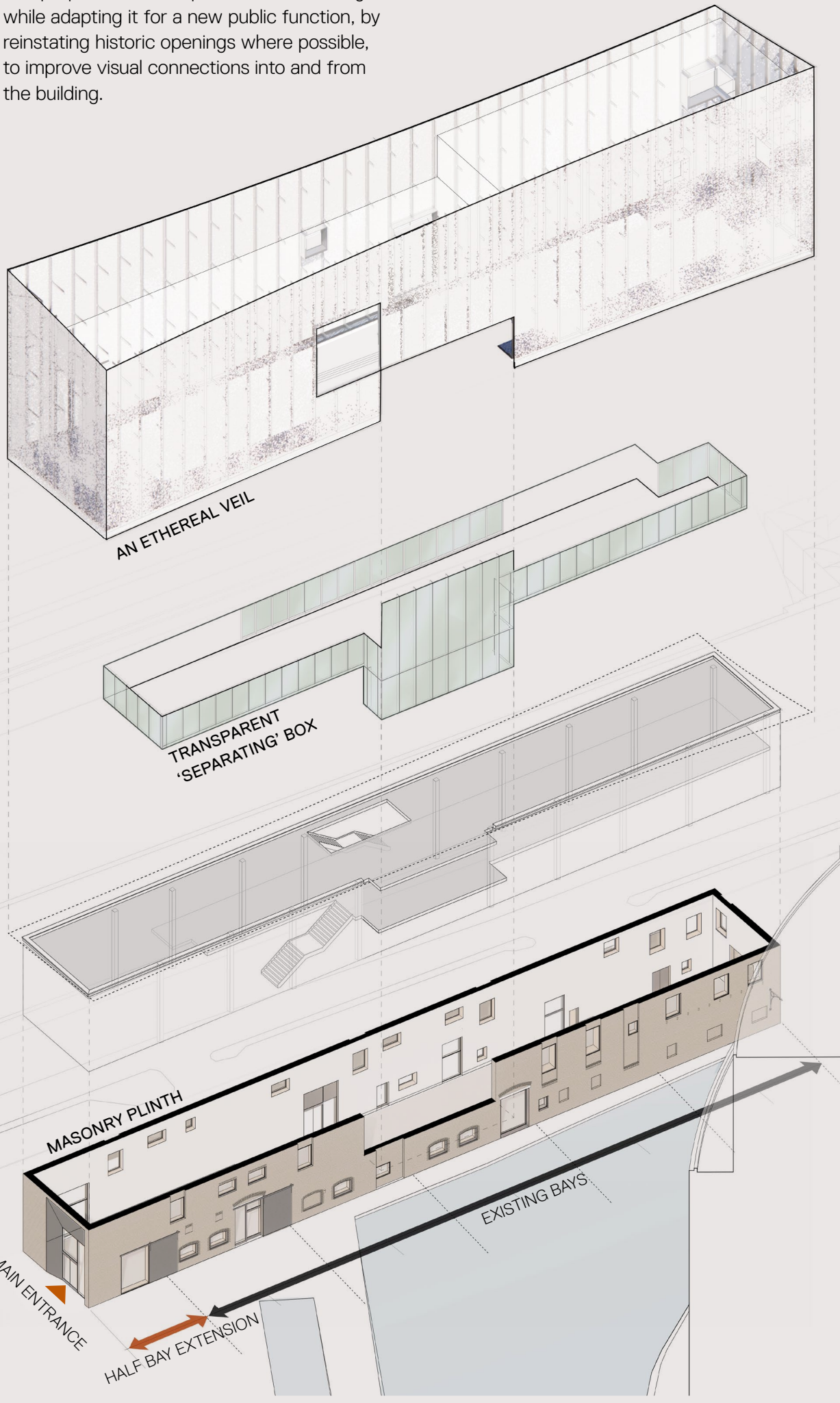
More than just a protective layer, the envelope embodies the intersection of aesthetics and functionality, representing the essence and spirit of the building.



APPROACH TO HERITAGE

The Bays, with its historic brick walls and industrial details, is the last remaining wharf building on the basin, serving as a vital link to the area's once-thriving waterside character.

The proposal seeks to preserve the building while adapting it for a new public function, by reinstating historic openings where possible, to improve visual connections into and from the building.



A HEALTHY BUILDING

AN EMBEDDED APPROACH TO SOCIAL AND ENVIRONMENTAL SUSTAINABILITY

The building is designed to minimise its operational carbon footprint by leveraging the site's unique characteristics, integrating existing structures, and aligning with the project brief.

Reflecting AMR research's mission, it promotes health and wellbeing while fostering a healthy environment for all occupants and visitors.



A JOURNEY OF DISCOVERY



Public Realm: STEM playscape



Level 00: Main Entrance



Level 01: Discovery Centre

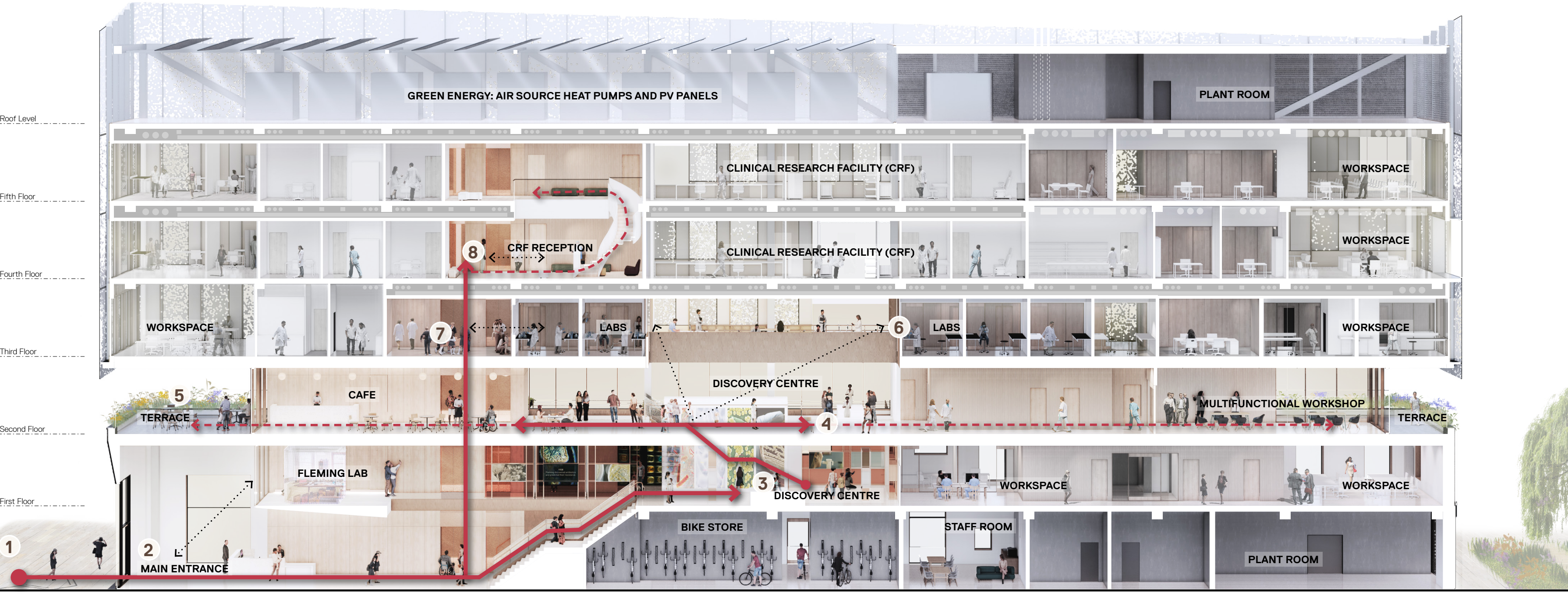
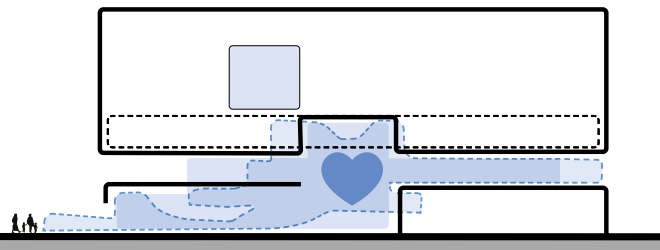


Level 02: Discovery Centre

A CATALYST FOR INTERACTION

The building acts as an interdisciplinary hub, inviting visitors into a journey of learning, discovery, and engagement. With accessible, interactive exhibits focused on antimicrobial resistance, and dynamic visually connected and shared spaces it offers visitors opportunities for direct connections with researchers, healthcare professionals, and policymakers, creating a vibrant, inclusive platform for shared knowledge and innovation. This collaborative environment encourages exploration and fosters a culture of discovery.

Public Route



Long Section: Public Journey through the building



Level 02: Public Terrace and Cafe



Visual connection to Laboratories at Level 03



Level 03: Discovery Centre - Lab Tours



Level 04: Clinical Research Facility (CRF) Reception