

Carbon Reduction Plan

Supplier name: Imperial College Healthcare NHS Trust

Publication date: October 2025

Commitment to achieving Net Zero

Imperial College Healthcare NHS Trust is committed to achieving Net Zero emissions by 2045. Our Green Plan is our commitment to reduce our impact on the environment and to deliver sustainable healthcare, helping to secure better health, for life for generations to come. We will work with patients, staff, local communities and partners to put our organisation on a path to a cleaner, greener, healthier and more equitable future.

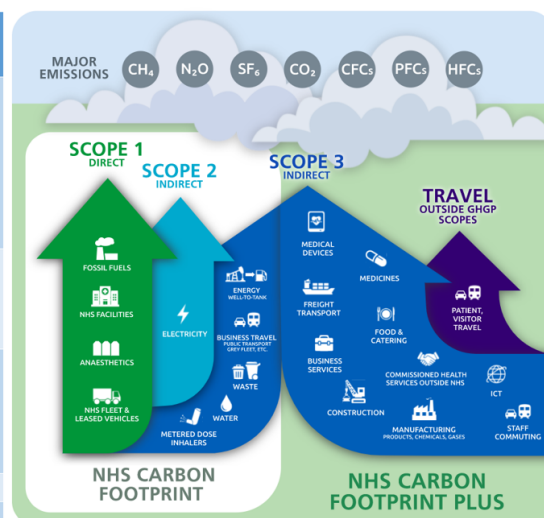
We are focused on acting to deliver against the two headline targets contained in the statutory guidance report Delivering a Net Zero National Health Service. Set against a baseline year of 2019/20 these two nationally set NHS targets are:

- for emissions we control directly (the NHS carbon footprint), to reach net zero emissions by 2040, reducing emissions by at least 47 per cent by 2028-2032; and
- for emissions we can influence (the NHS carbon footprint plus), to reach net zero emissions 2045, reducing emissions by at least 73 per cent by 2036-2038.

Baseline Emissions Footprint

Baseline Year: 2019/20
Additional Details relating to the Baseline Emissions calculations.
The Greener NHS has produced a 2019/20 baseline for all NHS organisations – however, this does not provide a breakdown of buildings energy into gas, electricity and oil. This is reproduced below.

	Emissions (tCO ₂ e)	% of NHS carbon footprint plus
NHS carbon footprint	75,970	27.6%
• Building energy	50,434	18.3%
• Waste	1,225	0.4%
• Water	445	0.2%
• Anaesthetic gases	3,934	1.4%
• Inhalers	160	0.1%
• Business travel and fleet	19,772	7.2%
Personal travel	15,036	5.5%
• Staff commuting	8,240	3.0%
• Patient travel	4,461	1.6%
• Visitor travel	2,335	0.8%
Medicines, medical equipment and other supply chain	182,319	66.3%
• Medicines and chemicals	66,267	24.1%
• Medical equipment	39,096	14.2%
• Non-medical equipment	21,684	7.9%
• Other supply chain	55,272	20.1%
Commissioned health services outside NHS	1,559	0.6%
NHS carbon footprint plus	274,884	100.0%



The Trust also produces its own estimate (referred to as ICHT analysis) for our NHS Carbon Footprint annually – which uses emissions factors contained in the Greener NHS Activity-based emissions factors for greenhouse gas modelling in the NHS – or emissions factors sourced from NHSE. And, in some instances the methods and scope for calculating emissions differ between the ICHT analysis and Greener NHS analysis e.g. business travel and fleet.

Emissions (tCO ₂ e)	2019/20	2020/21	2021/22	2022/23	2023/24	2024/25
Gas, electricity and oil	50,866	47,192	50,339	45,988	43,750	40,167
Waste disposal	869	878	946	907	786	329
Water and sewage	467	444	175	218	192	164
F-gases	431	431	431	431	431	431
All anaesthetic gases (returns based)	4,022	3,395	3,426	3,850	1,774	1,611
Inhalers (propellant only)	280	221	265	231	234	245
Fleet and business travel	293	298	295	302	234	335
TOTAL - NHS Carbon Footprint	57,228	52,860	55,878	51,928	47,402	43,282

Baseline year emissions: 2019/20

EMISSIONS	TOTAL (tCO ₂ e)
Scope 1	See Greener NHS estimates below
Scope 2	See Greener NHS estimates below
Scope 3 (Included Sources)	See Greener NHS estimates below
Total Emissions	Greener NHS analysis for total emissions, which in 2019/20 is estimated to be 274,884 tCO ₂ e.

	Emissions (tCO ₂ e)
<u>NHS carbon footprint</u>	75,970
• Building energy	50,434
• Waste	1,225
• Water	445
• Anaesthetic gases	3,934
• Inhalers	160
• Business travel and fleet	19,772
Personal travel	15,036
• Staff commuting	8,240
• Patient travel	4,461
• Visitor travel	2,335
Medicines, medical equipment and other supply chain	182,319
• Medicines and chemicals	66,267
• Medical equipment	39,096
• Non-medical equipment	21,684
• Other supply chain	55,272
Commissioned health services outside NHS	1,559
NHS carbon footprint plus	274,884

Current Emissions Reporting

Reporting Year: 2024/25	
EMISSIONS	TOTAL (tCO ₂ e)
Scope 1	Fossil fuels: 40,166.7 tCO ₂ e F-gases: 431.2 tCO ₂ e Anaesthetic gases: 1,610.5 tCO ₂ e Fleet and business travel: 335.3 tCO ₂ e TOTAL: 42,543.7 tCO₂e <i>Note: ICHT analysis and includes WTT where applicable</i>
Scope 2	TOTAL: 18,671.1 tCO₂e <i>Note: ICHT analysis and includes WTT</i>

Scope 3 (Included Sources)	<p>The Trust does not have full up-to-date scope 3 GHGE data, but has the following:</p> <p>Waste: 329.1 tCO₂e</p> <p>Water and sewage: 164.5 tCO₂e</p> <p>Inhalers: 244.8 tCO₂e</p> <p><i>Note: ICHT analysis and includes WTT where appropriate, inhalers is propellant only.</i></p>
Total Emissions	<p>The Trust does not have a “true” figure for Total Emissions – see above – as it does not have information on the majority of its scope 3 emissions, with the exception of the small number presented above.</p>

Emissions reduction targets

In order to continue our progress to achieving Net Zero, we have adopted the following carbon reduction targets that are contained in our refreshed Green Plan 2024/25 to 2026/27.

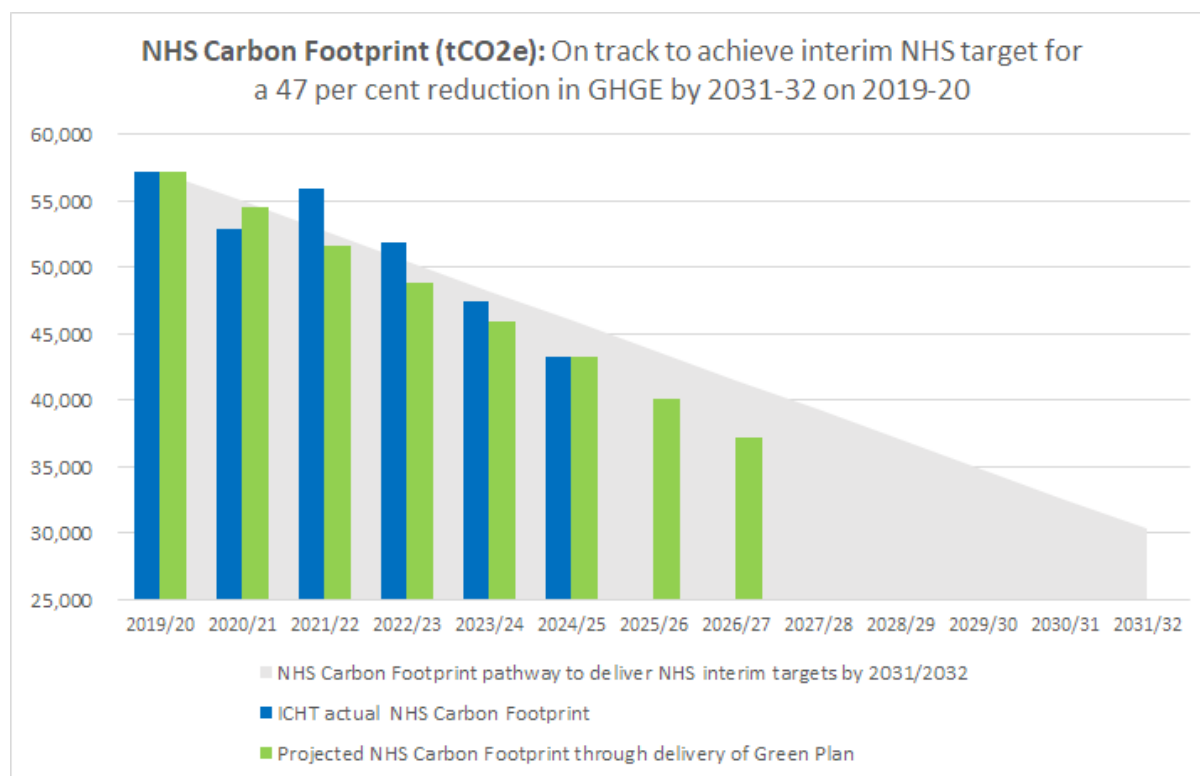
- Reduce our carbon emissions from our combined consumption of gas, oil and electricity by at least a third by 31 March 2027 on our 2019/20 baseline
- Reduce our water consumption across the Trust by 20% by 31 March 2027 compared to 2022/23 levels
- Achieve a clinical waste segregation ratio of 20:20:60 by 31 March 2027 (baseline 2022/23)
- Reduce total waste disposal emissions by 50% by 31 March 2027 (baseline 2022/23)
- Reduce our fleet and business travel emissions
- Reduce our carbon NHS footprint of medicines that have a high global warming potential (GWP) at the point of use (inhaler propellant, nitrous oxide, Entonox and volatile agents) by at least 40% by 31 March 2027 (or earlier) against our 2019/20 baseline
- Increase the proportion of lower carbon / plant-based inpatient meals ordered
- Reduce inpatient food waste
- Increase the number of walking aids returned (baseline 2023/24)
- Ensure all staff are supported to meaningfully apply a social value weighting (including net zero) of at least 10% to all new procurement and to work collaboratively with partners and suppliers to drive down our NHS carbon footprint plus

Delivering our refreshed Green Plan will mean that by 31 March 2027 our NHS carbon footprint will decrease over the three year period of the Plan by 34% on our 2019/20 baseline.

Carbon Reduction Projects

Completed Carbon Reduction Initiatives

Since 2019-20 our NHS Carbon Footprint has fallen from 57,228 to 43,282 tCO₂e in 2024-25. Our analysis indicates that our NHS Carbon Footprint in 2024-25 was 8.7 per cent down on the year, and 24.4 per cent down on the 2019-20 baseline.



The following sections provide a snapshot of the progress we have made and our successes in 2024-25 across our nine Green Plan themes:

Workforce and system leadership

- Expanded our green community network to 683 members.
- Launched our green champions programme, and recruited 85 green champions.
- Embedded Green Plan scoring metrics into our Ward Accreditation Programme.
- Delivered two workshops to our Paddington Life Sciences Partners to make a stronger business case for our redevelopment.
- Secured three sustainability apprentices, for 15-month placements at the Trust.

Estates and facilities

- Secured cumulative external and internal funding of £120 million since 2021 to invest on heat decarbonisation and energy efficiency projects, estimated to reduce our annual NHS Carbon Footprint by 20,233 tCO₂e in the long-term.
- Commissioned a fifth heat pump at Charing Cross Hospital, commissioned three heat pumps and completed a de-steaming project at Hammersmith Hospital.
- Signed a heads of terms for the OPDC heat network.
- Improved our meter and flow monitoring infrastructure to enhance our ability to investigate and rapidly resolve water leaks.

- Partnered with Imperial Health Charity to develop a small number of plans to make significant green space improvements and coordinated volunteers to make small improvements to the rear of Queen Charlotte's and Chelsea Hospital.
- Secured £12.88 million from the NHS National Energy Efficiency Fund to implement a major programme of LED projects and to upgrade our buildings management systems.
- Secured an award for Sustainable Project of the Year at the inaugural Forbo Awards for our new oncology refurbishment project through use of marmoleum flooring which is a climate positive natural product.
- Conducted a BREEAM pre-assessment to target a BREEAM 'Excellent' rating for the new Fleming Centre.
- Designed new bin labels and poster resources for all our waste streams to better support staff to segregate waste.
- Expanded our food recycling waste stream from inpatient dining and restaurants to wider parts of the Trust.
- Engaged with our onsite tenants in ways to encourage better waste segregation and more recycling.
- Included Green Plan and waste segregation and emission education and training into our hotel service staff induction materials.

Travel and transport

- Provided interest free season ticket loans for employees alongside a new more streamlined online season ticket loans process
- Launched a three-year Air Quality partnership with Hammersmith and Fulham Council and Imperial College London
- Supported 112 staff members to purchase a bike via our Cycle to Work Scheme.
- Delivered 21 Dr Bike maintenance events that checked 286 staff bikes.
- Installed bike lock racks and fixed the bike pumps at each of our bike sheds.
- Reaccredited as a gold cycle friendly employer with Cycle UK..

Medicines

- Secured approval to decommission the nitrous oxide manifold supply at the Western Eye Hospital.
- Secured approval to pilot an innovation to switch the gas used in cryotherapy machines the Western Eye Hospital from nitrous oxide to carbon dioxide.
- Explored the feasibility of adding oral paracetamol to the premedication protocols for surgical patients in order to remove the need to give intravenous paracetamol in recovery.
- Expanded the number of inhaler recycling drop-off locations across our three main sites to 11 location and promoted these to our staff.
- Commenced an insulin pen recycling pilot at the Trust.

Food and nutrition

- Updated and redesigning the patient à la carte menu to encourage lower-carbon food choices by reordering and listing plant-based dishes first and beef dishes last, alongside adding sustainability messaging in the menu introduction.
- Renamed the vegan menu to "plant-based" in response to evidence suggesting that the term "vegan" can carry negative associations and may discourage some individuals from choosing lower-carbon meals.
- Introduced our first high-energy, high-protein plant-based salad: the Provençale bean salad.

- Reduced processed meats on our menus, leaving only three dishes that contain processed meats (i.e. ham sandwiches, ham salad, and pork and leek sausages).
- Conducted an inpatient food survey to better understand patient attitudes towards hospital food and the environmental impact.
- Transitioned from a multi-portion inpatient meal service to a plated meal solution to reduce food waste, with only three areas utilising a multi-portion meal service. Piloted a staff kitchenette food waste pilot at the Western Eye Hospital. .

Sustainable models of care

- Expanded the number of our walking aids drop-off locations to cover our three main sites, collecting 957 walking aids, with around 80 per cent being re-issuable.
- Established a green theatres group.
- Supported clinical teams to undertake local clinical green projects and greener product switches, such as:
 - a greener product switch for skin-disinfecting in peripheral vascular access and central line insertions, that when rollout across the Trust is estimated to reduce annual plastic waste volumes by 2.1 tonnes, reduce carbon emissions by 6.2 tCO₂e, and make an annual cost saving of around £180,000; and
 - removing paper couch rolls in physiotherapy MSK outpatients, estimated to reduce paper use of 20 rolls per month which equates to around 75 kgCO₂e.
- Moved to a theatre managed service to reduce expiries and optimise inventory levels, leading to an estimated reduction in greenhouse gas emissions of 848 tCO₂e, against pre-service levels.
- Launched a Circular Economy for Healthcare Alliance with four other NHS Trusts.

Digital transformation

- Created new communications materials, including animations, to support increasing the number of registered users of Care Information Exchange.
- Co-designed and piloted the Choice Booking approach that offers patients a choice of dates and times for outpatient appointments, resulting in reductions in wasted resources such as paper and postage, via reductions in hospital and patient-initiated cancellations and DNAs.
- Admitted 2,559 patients to virtual wards leading to 5,118 bed days saved which equates to a greenhouse gas emission saving of 194 tCO₂e
- Continued to benefit from a computer power management solution, avoiding 591 tCO₂e of greenhouse gas emissions in year, and simultaneously generating £578,000 cost avoidance through reducing wasted electricity compared with pre-solution implementation.
- Contributed to an estimated 210,306 trees being planted worldwide, since mid-2023, from having Ecosia as our default search engine at the Trust.
- Continued to dispose of ICT assets in an environmentally responsible, secure and ethical manner, avoiding 228 tCO₂e in year
- Supported work to produce Making the Greener Digital Decision at NWL ICS: Category Guidance and User Guide.
- Supported a number of local QI project to digitise processes and reduce paper.

Supply chain and procurement

- Included environmental sustainability into our Investment Appraisal Framework.

- Formed a North West London Social and Sustainable Procurement Working Group to support collaborative action around the NHS net-zero supplier roadmap.
- Continued to ensure that all new procurements include environmental considerations into tender specifications and also include a minimum 10% social value weighting.

Adaptation

- We added 'climate change' as an explicit risk area in our board assurance framework (BAF), and review this risk alongside other existing BAF risk areas such as 'Poor condition of estates' and 'New Hospitals Programme funding and affordability'
- Established workshops to identify solutions that will mitigate identified impacts from climate change and changing weather patterns for the new Fleming Centre to be built on the St Mary's Hospital campus in Paddington by 2028.

In the future we hope to implement further measures such as:

- implementing our estates decarbonisation projects;
- continuing to seek external sources of funding (both large for buildings decarbonisation and small for more local carbon reducing projects);
- decommissioning the nitrous oxide manifolds at Western Eye Hospital and St Mary's Hospital;
- adopting reusable surgical textiles in a small number of pilot areas;
- initiating at least 2 to 3 green projects as part of our Green Theatres Group;
- supporting teams to transition fleet vehicles to EV;
- progressing our air quality collaboration work;
- supporting, where feasible, initiatives that promote active travel and cycling;
- producing a green space resources for staff, patients, and visitors;
- continuing to deliver our programme of staff engagement, leaning and support with green projects;
- producing resources for staff to meaningfully consider net zero and social value into purchasing, procurement, investment and contract management decisions;
- supporting the business case for redevelopment through embedding a shared sustainability mission with all our Paddington Life Science Partners; and
- progressing our climate change adaptation efforts.

Note: The Trust can share our Board approved Green Plan, that covers the period 2024/25 to 2026/27, upon request. A high-level summary of our Green Plan can be found in the Sustainability Section of our Annual Report and Accounts here <https://www.imperial.nhs.uk/about-us/how-we-are-doing/annual-reports>. Our Green Plan goals can be found here [Our Green plan | Imperial College Healthcare NHS Trust](#).

Declaration and Sign Off

This Carbon Reduction Plan has been completed in accordance with PPN 06/21 and associated guidance and reporting standard for Carbon Reduction Plans.

Emissions have been reported and recorded in accordance with the published reporting standard for Carbon Reduction Plans and the GHG Reporting Protocol corporate standard¹ and uses the appropriate Government/Greener NHS emission conversion factors for greenhouse gas company reporting².

Scope 1 and Scope 2 emissions have been reported in accordance with SECR requirements, and the required subset of Scope 3 emissions have been reported in accordance with the published reporting standard for Carbon Reduction Plans and the Corporate Value Chain (Scope 3) Standard³.

This Carbon Reduction Plan has been reviewed and signed off by the board of directors (or equivalent management body).

Signed on behalf of the Supplier:


A handwritten signature in black ink, appearing to read 'Bob Klaber', is written over a faint, rectangular grid background.

Dr Bob Klaber, Board-level net-zero lead, Consultant paediatrician and Director of strategy, research and innovation

Date: 26.09.2025

¹<https://ghgprotocol.org/corporate-standard>

²<https://www.gov.uk/government/collections/government-conversion-factors-for-company-reporting>

³<https://ghgprotocol.org/standards/scope-3-standard>