

# NWL Heart Failure Pathway Innovation

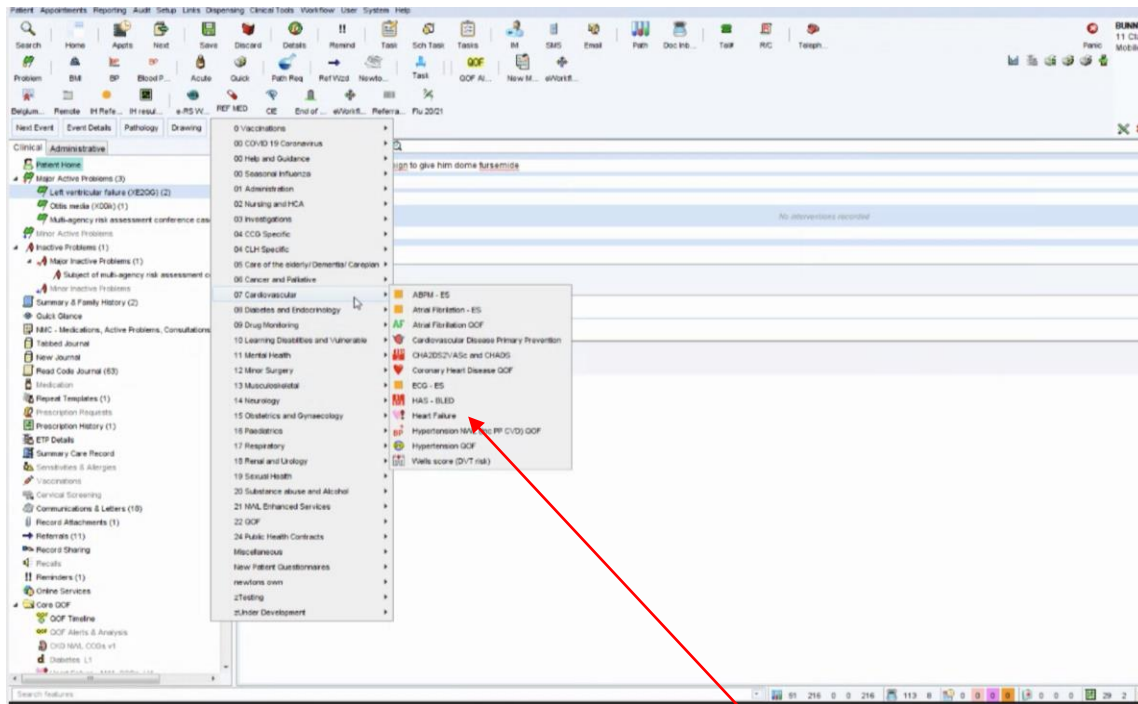
System One Templates

June 2021

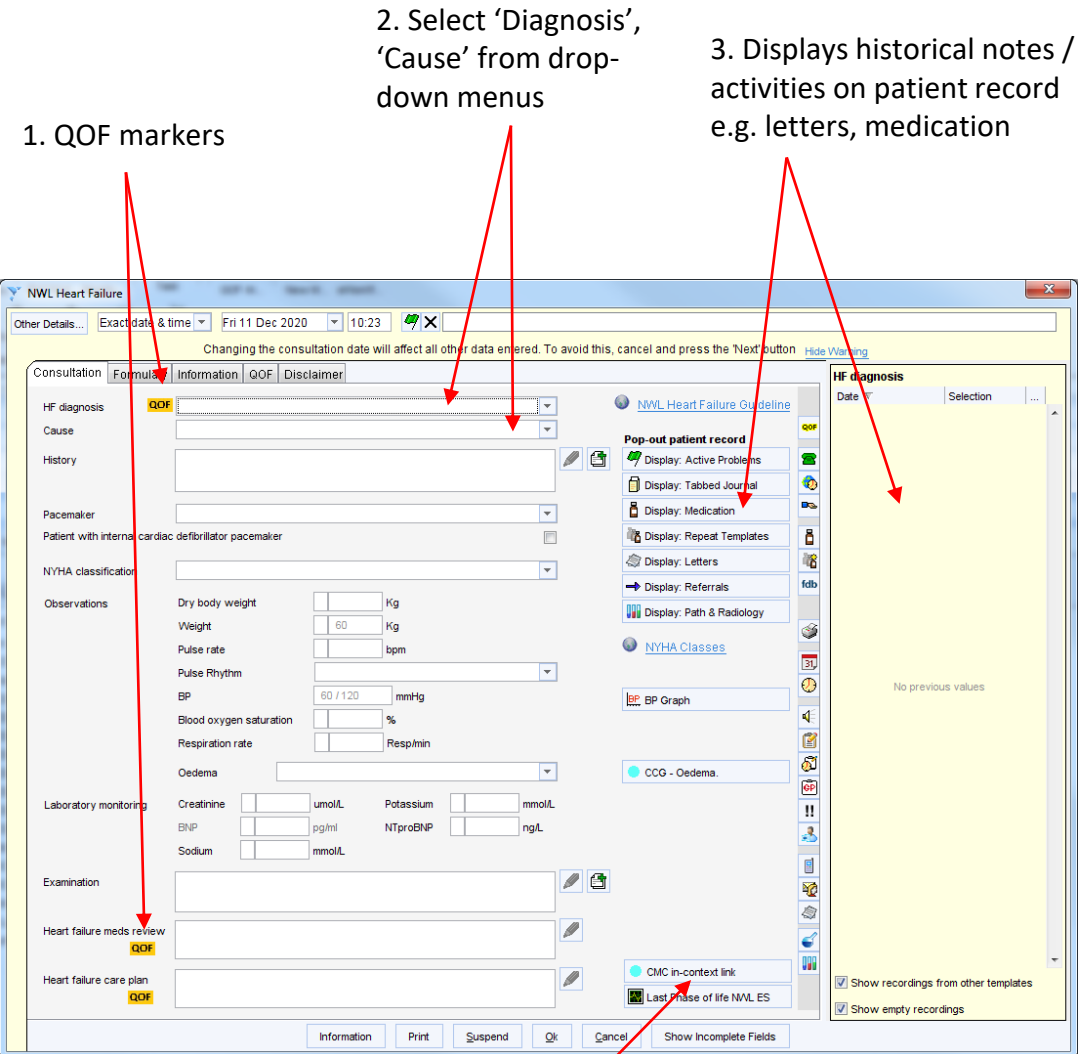
# The new GP Heart Failure template – key features

## Features / functions

1. QOF (GP payment targets) markers
2. Ability to select from drop-down menus
3. Ability to view history of notes / activity on patient record
4. Link to palliative care planning tool



Located within Cardiovascular section



4. Link to palliative care planning tool

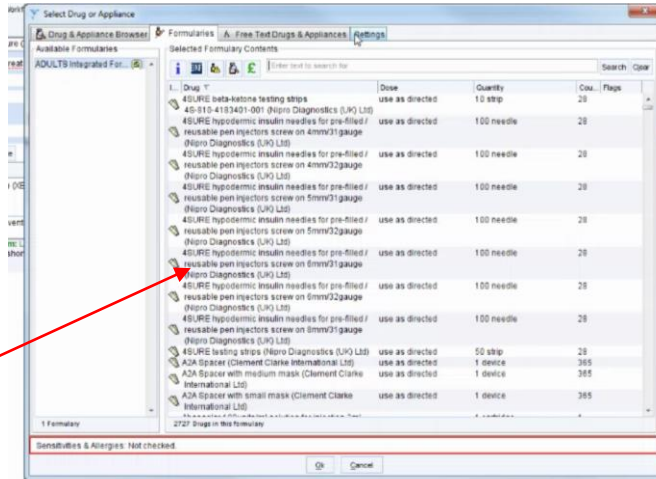
# The new GP Heart Failure template – key features

## Features / functions

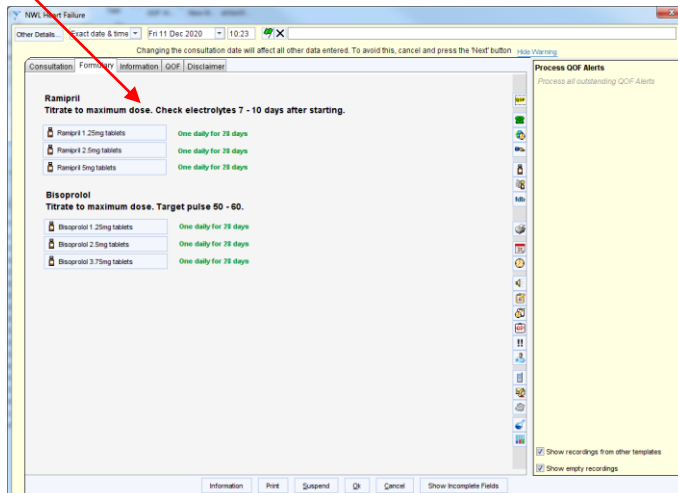
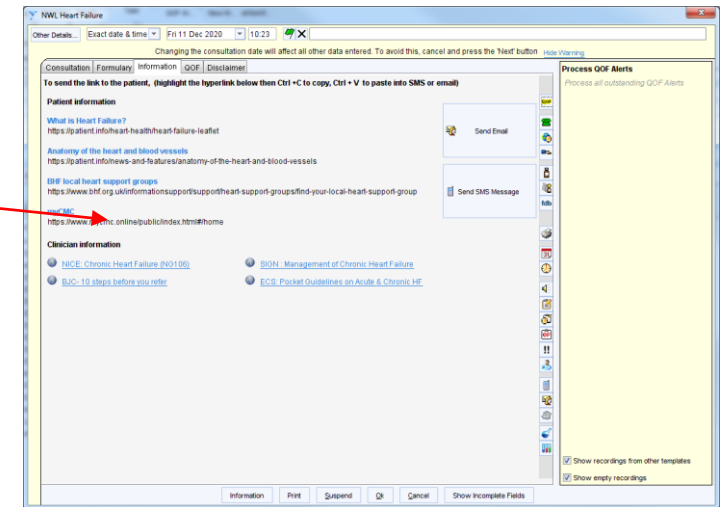
5. Select drugs / dosage formulary
6. Access useful information and links to heart failure videos / resources

**NB. Many more changes are in progress to improve the GP user experience and to create more integrated care and better communication with specialist HF services. For example, each GP surgery will have a named HF nurse who will be responsible for building more personal relationships with the GPs.**

5. Select drugs / dosage + guidance and 'nudges' for GPs



6. Access links to further information / resources



# Changes to the GP pathology system – improving HF referrals

## Features / functions

7. Guidance for GPs to refer to the specialist heart failure services, directly from the blood test / pathology results that GPs can access via the EHR. It is hoped that this will increase the number of patients being referred
8. Shortness of Breath panel has added NT-pro BNP test option to increase opportunities for GPs to request them

BNP levels from blood test

Date	Result	Notes
18 Dec 2020	714.5	Above high reference limit Newly launched test - UKAS accreditation pending. (NOTE) NT-proBNP <400 ng/L: HF unlikely, consider alternative. Please refer to: <a href="https://www.nice.org.uk/guidance/ng106/resources/chronic-heart-failure-diagnosis-visual-summary-pdf-6663137726">https://www.nice.org.uk/guidance/ng106/resources/chronic-heart-failure-diagnosis-visual-summary-pdf-6663137726</a> NT-proBNP 400-2000 ng/L: Requires assessment by a specialist heart failure team (including an echocardiogram), should be seen within 6 weeks NT-proBNP >2000 ng/L: Requires assessment by a specialist heart failure team (including an echocardiogram), should be seen within 2 weeks

7. Added text saying that BNP levels are above threshold and that a referral should be made to specialist HF services

(we are working on clarifying this copy and creating a clearer call to action)

8. NT pro-BNP added as an option on the SOB panel

SOB - non Acute Dyspnoea

- FBC
- CRP
- Renal profile
- Liver Function Tests (LFT)
- Thyroid function (TSH)
- NT Pro BNP

Select All    Deselect All

# HFSN templates required a redesign from their current format

The previous HFSN templates were cumbersome with too many tabs and information which were not efficiently designed / organised. HFSNs had to repeatedly manually enter information into the patient record and also the patient letters. With the new GP HF template, it was important to mirror the same codes and features of that template into the new HFSN template design.

## Previous HFSN templates

The screenshot shows the 'Previous HFSN templates' interface. It features a top navigation bar with tabs for 'Past Medical History', 'Symptoms & Past Medical History', 'Other Past Medical History', 'Medication & Allergies', 'Examination & ECO & Devices', and 'ECHO & Other Investigations'. The main content area is divided into several sections: 'Symptoms' (Presenting complaint, Dyspnoea, Chest pain, etc.), 'Past Medical History and Social Information' (Past medical history, Family history, Social and Environmental Information), and 'Presenting complaint' (Date, Time, etc.). The interface is cluttered with many fields and checkboxes, and the layout is not intuitive.

The screenshot shows the 'New GP HF template' interface. It features a top navigation bar with tabs for 'Past Medical History', 'Symptoms & Past Medical History', 'Other Past Medical History', 'Medication & Allergies', 'Examination & ECO & Devices', and 'ECHO & Other Investigations'. The main content area is divided into several sections: 'Other Problems' (Primary dilated cardiomyopathy, Ischaemic heart disease, etc.), 'Known Heart Failure' (H/O diabetes mellitus type 1, H/O chronic obstructive pulmonary disease, etc.), 'Rhythm Problems' (H/O atrial fibrillation, H/O atrial flutter, etc.), 'New York Heart Association' (30 Jun 2020, 28 Jul 2020, 25 Aug 2020), 'All pathology reports' (08 Apr 1997, 12 May 1999, 13 May 1999), and 'All Read coded entries below Referral for home intravenous medical' (Referral for home intravenous medication administration). The interface is more organized and easier to navigate than the previous version.

# The new HFSN Heart Failure template – key features

## Features / functions

1. Refined number of tabs and re-organised data input sections making it easier to input data
2. Aligned heart failure coding
3. Key blood test information displayed
4. Pop-outs for Investigations & Devices and RPM
5. RPM – patient status, onboarding, offboarding

## Diagnosis

## Investigations & Devices

## Remote patient monitoring



# The new HFSN Heart Failure template – key features

## Features / functions

1. Refined list of symptoms to manage
2. NYHA in the right place
3. Patient goals and actions included here – for automatic extraction into the letters
4. QOL questionnaire scoring for recording in S1
5. Medication notes that the HFSNs can easily provide into a free text box

## Symptoms & Observations

Heart Failure Test version

Diagnosis, patient history, investigations | Investigations & Devices | Symptoms and observations | Medications | Recommendations and outcomes | Cardiac Rehab | EC... | Syncop

**Symptoms**

Cough

Dyspnoea  **Dyspnoea (XE0qq) (SNOME...)**

Chest pain on exertion

Chest pain at rest (unstable angina) (Ongoing Episode)

Palpitations

Abdomen feels bloated

Oedema

Orthopnoea

Number of pillows

Paroxysmal nocturnal dyspnoea

Presyncope

Syncop

Nausea

Fatigue

**New York Heart Association**

28 Oct 2020 New York Heart Associatio...

12 Nov 2020 New York Heart Associatio...

02 Dec 2020 New York Heart Associatio...

07 Jan 2021 New York Heart Associatio...

22 Apr 2021 New York Heart Associatio...

Current NYHA

**Patient target goals and actions**

Agreeing on patient actions in care plan

Identifying personal goals

**Observations**

Dry weight  92 Kg

O.E - weight  92 Kg

Heart rate  BPM

Blood oxygen saturation  %

bp notes ( regular / irregular?)  high and irregular.....

**Nutrition and Elimination**

Fluid intake  drinks a lot of coffee

Dietary intake observations

Bowel assessment

Urine observation

**Mobility and Exercise**

Walking aid use

Mobility incline/flat

Exercise history

Observation of general energy

**Questionnaires**

Minnesota QoL score - START  05 May 2021  GAD7 Score NML CCGs

suggestive of a poorer quality of life.

Please note a score of <24 suggests a good quality of life.

Minnesota QoL score END

Please note a score of <24 suggests a good quality of life.

PHQ9 Assessment - NML CCGs

Patient Health Questionnaire PHQ 4

**Pop-out patient record**

- Display: Active Problems
- Pop Out Patient Record Node
- Display: Past Problems
- Display: Tabbed Journal
- Display: Medication
- Display: Repeat Templates
- Display: Letters
- Display: Referrals
- Display: Path & Radiology
- Display: future appointments
- BP Graph
- Referral Wizard
- New Task...
- CMC - in-context link

Show re  
 Show er

## Medications

Heart Failure Test version

Diagnosis, patient history, investigations | Symptoms and observations | Medications | Recommendations and outcomes | Page 5

**View of current medications**

Medication	Frequency	Date
Salbutamol 100micrograms/dose inhaler... TWO PUFFS AS RE...		12 May 2021
Anoro Ellipta 55micrograms/dose / 22micr...inhale 1 dose daily		14 Jun 2021
Furosemide 40mg tablets	Take TWO at 8am a...	11 Jun 2021
Furosemide 40mg tablets	Take TWO at 8am a...	16 Jun 2021
Ramipril 2.5mg capsules	take one daily	02 Jun 2021
Apixaban 2.5mg tablets	take one twice daily	18 Jun 2021
Atorvastatin 90mg tablets	take one daily	18 Jun 2021
Bisoprolol 5mg tablets	take one daily	18 Jun 2021
Chemydur 60XL tablets (Advanz Pharma)	take one each morn...	18 Jun 2021
Clopidogrel 75mg tablets	take one once daily	18 Jun 2021
Docusate 100mg capsules	2 bd	18 Jun 2021
Ezetimibe 10mg tablets	take one daily	18 Jun 2021

Following patient review, provide updates / comments for GP in the comments box below:

List of medications (free text)

**Sensitivity & Allergy Summary**

16 Jan 2007	PRAVASTATIN
09 Jun 1992	Adverse reaction to penicillins (TJ00.)
02 Jan 2007	[X]Angiotensin-convert-enz inhib caus advers eff therap use (U60C4)
02 Jan 2007	Angiotensin-converting-enzyme inhibitor adverse reaction (Xa5cT)
16 Jan 2007	Adverse reaction to salicylates (XE22E)

Record Allergy or Sensitivity

**Pop-out patient record**

- Display: Active Problems
- Pop Out Patient Record Node
- Display: Past Problems
- Display: Tabbed Journal
- Display: Medication
- Display: Repeat Templates
- Display: Letters
- Display: Referrals
- Display: Path & Radiology
- Display: future appointment
- BP Graph
- Referral Wizard
- New Task...
- CMC - in-context link

# The new HFSN Heart Failure template – key features

## Features / functions

1. Easier, direct referrals via S1 instead of using letters to refer to community
2. Letters are featured in one place, on this tab
3. Data is automatically extracted into letters

## Recommendations & Outcomes

Heart Failure Test version

Diagnosis, patient history, investigations Symptoms and observations Medications Recommendations and outcomes Page 5

Consultation type - select from presets

Additional notes, free text box

GP actions

Cardiac Rehab

End of Life Checklist

Discussion about advance care plan

Advance care planning declined

Discussion about ACP not appropriate at this time

**Referrals**

- Referral to Community Matrons, DNs & Other
- Refer for echo/ECG via Enhanced Cardiology Service

hospital prevention  Hospital admission avoided (XaONT)

Possibly eligible for participation in clinical trial

**Advice given**

Other Advice Given

Advice about exercise

Advice on alcohol consumption

Advice about prognostic medication

Advice on smoking

Dietary advice given

Patient advised to lose weight

**Patient target goals and actions**

Agreeing on patient actions in care plan

Identifying personal goals

Care Plan HFSN to patient

**Outcome**

Click to select Outcome and create clinic letter

**View of reasons for declining RMP**

All Read coded entries matching Telehealth

**Pop-out patient record**

- Display: Active Problems
- Pop Out Patient Record No
- Display: Past Problems
- Display: Tabbed Journal
- Display: Medication
- Display: Repeat Templates
- Display: Letters
- Display: Referrals
- Display: Path & Radiology
- Display: future appointment
- BP Graph
- Referral Wizard
- New Task...
- CMC - in-context link

## Cardiac Rehab

Cardiac Rehab

Cardiac Rehab

Cardiac rehab programme offered - accepted?comment

Cardiac rehabilitation programme completed

Referral to cardiac rehabilitation programme declined

Not suitable for cardiac rehabilitation programme

## Referrals

Referral to community

Referral to community reasons

1. Complete the referral form below

2. Click the button below to send a SystemOne to SystemOne referral via task

Refer to CLOI (Adult Community Nursing) - Central London CCG

## Outcome

heart failure outcome

Outcome

\*Outcome

- Discharge from heart failure nurse service (...)
- Discharge from care (Xa1pZ)
- Follow-up 1 week (SH84)
- Follow-up 2 weeks (SH85)
- Follow-up 1 month (SH87)
- Follow-up 2-3 months (SH88)
- Follow-up 4-6 months (SH89)
- Follow-up 1 year (SH98)

\*Further community diagnostics required?  Test request (Xa1g)  No test request given (Xa1t)

Please select a test(s):

- Referral for echocardiography (Xa1aN)
- Referral for cardiac event recording (XaY...)
- Referral for ambulatory blood pressure rec...
- Referral for 24 hour ECG (Xa1pL)
- Referral for exercise tolerance test (Y2...)
- Other diagnostic tests (Xa1mB)

Date	Selection
20 Jun 2018 10:46	Discharge from care (Xa1pZ)
14 Dec 2020 12:28	Follow-up 1 month (SH87)
28 Jan 2021 12:35	Follow-up 1 month (SH87)
04 Mar 2021 16:49	Follow-up 1 month (SH87)
08 Mar 2021 09:08	Follow-up 4-6 months (SH89)
29 Mar 2021 15:02	Follow-up 2-3 months (SH88)
13 May 2021 11:35	Discharge from heart failure nurse service (Xa1pN)

Show recordings from other templates

Show empty recordings

Information Print Suspend Cancel



## Other key features and benefits of the new HFSN templates

- With new functionality programmed into the new templates, HFSNs will now be able to save the data upon completing a consultation record for each patient. This means they no longer have to copy and paste information back into the record nor manually input it again. HFSNs can reopen each patient profile and view what was recorded previously
- Blood test data can now be viewed easily on the Diagnosis tab which means HFSNs no longer need to access ICE to then copy and paste the details into S1
- Letters are easily and automatically generated by pulling in all of the information from the template – HFSNs can create letters efficiently without having to copy and paste information and they are able to add in any edits if they wish